



TOTAL REMEDY

USAGE PROTOCOL





A comprehensive hair care system
that solves complications caused by chemical
processes.

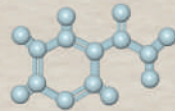
SCALP CLEANER

SWEETEEZ TOTAL REMEDY

THE KEY ACTIVE INGREDIENTS:



*Hyaluronic
Acid*



Niacinamide



Coenzyme-q10



Rice Protein



Silk Protein



Polyamine Acid

ADVANTAGES OF USE:

PH Balanced • Paraben-free • Healthy hair and scalp cleaning

Free from direct salts and sodium chloride



STRAND RECONSTRUCTOR

SWEETEEZ TOTAL REMEDY

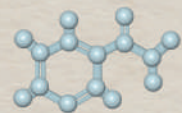
THE KEY ACTIVE INGREDIENTS:



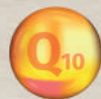
Polyamine Acid



Hyaluronic Acid



Niacinamide



Coenzyme-q10



Rice Protein



Silk Protein



Keratin



Flaxseed Extract

ADVANTAGES OF USE:

Hair deep hydration • Promotes a healthy appearance and prevents hair aging
Treating hair breakage and dryness • Removing frizz and reducing hair volume



TOTAL SEALLER

SWEETEEZ TOTAL REMEDY

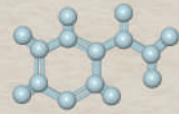
THE KEY ACTIVE INGREDIENTS:



Polyamine Acid



Hyaluronic Acid



Niacinamide



Coenzyme-q10



Fibroin



Sarcin



Panthenol



Flaxseed Extract

ADVANTAGES OF USE:

Removes frizz • Increasing hair shine • Reducing split ends

Closing the hair scales and forming a protective covering around the hair fibers





THERAPEUTIC
USE PROTOCOLS



TOTAL REMEDY THERMAL HAIR TREATMENT:

Sweeteez Professional Scalp Cleaner should be applied on the scalp in a circular motion to remove sediment and accumulated oil, then rinse the hair thoroughly with running water. Repeat this process two or three times more if necessary.

- Using a cotton towel, soak off any extra water.
- Apply Sweeteez's Professional Strand Reconstructor on the hair strands, rub them gently, and then cover the hair with a thermal cap for 30 to 45 minutes.
Rinse the hair well with water and gently dry with a cotton towel.
- Divide the hair into wide strands and spray each strand with Sweeteez Professional Total Sealer and comb the hair to ensure a better distribution of the spray.
- A good blow-dry should be performed on the hair, and if wanted, can be ironed at 180 degrees using a hair iron.
- After the session, do not rinse the hair; instead, retain it for the next wash.
- This treatment can be performed once a month, or twice a month if the hair is heavily damaged, until the desirable result is obtained.

DEEP MOISTURIZING SESSION FOLLOWING COLOR AND DYE REMOVAL AND CHEMICAL STRAIGHTENING:

On clean hair:

- 30 grams of Gold Caviar Mask
- 80 g of Strand Reconstructor from Sweeteez Professional
- 10 milliliters of Total Sealer from Sweeteez Professional
- 1 ampoule Sweeteez Vitamin Complex.
- 5 squeezes of Trata Gold Serum.

Mix the ingredients thoroughly, then apply on clean hair and cover with a heated hair cap for 45 minutes.

After that, the hair should be rinsed and a good blow-dry be performed. If desired, the hair can be ironed at 180 degrees with a hair iron.



TO ELIMINATE FRIZZ WHILE KEEPING HAIR VOLUME.
SUITABLE FOR THIN AND FRAGILE HAIR:

On clean hair:

- 80 gm of Strand Reconstructor from Sweeteez Professional
- 10 milliliters of Gold Caviar Protein
- 1 Ampoule Sweeteez Flash Cells
- 20 milliliters of water

Mix the ingredients together, then apply to clean hair and leave it on for 60 minutes.

After that, rinse the hair, give it a good blow-dry, and iron it with a hair iron set on 180 degrees.



FOR DEEP NOURISHMENT WITH A MINIMUM STRAIGHTENING RATIO FOR WAVY HAIR LOVERS:

On clean hair:

- 80 gm of Strand Reconstructor from Sweeteez Professional
- 20 milliliters of Gold Caviar Protein
- 1 Ampoule Sweeteez Flash Cells
- 1 ampoule Sweeteez Vitamin Complex
- 3 squeezes of Gold Caviar Serum
- 10 milliliters from Sweeteez's Total Remedy Total Sealer

Mix the ingredients together, then apply to clean hair and leave it on for 60 minutes.

After that, rinse the hair, give it a good blow-dry, and iron it with a hair iron set on 180 degrees.



FOR A DEEP MOISTURIZING AND HAIR LAMINATION SESSION

On clean hair:

For natural hair:

- 80 g of Strand Reconstructor from Sweeteez Professional
- 1 Ampoule Sweeteez Flash Cells
- 4 squeezes of Gold Caviar Serum

Mix the ingredients together, then apply to clean hair and leave it on for 60 minutes. After that, rinse the hair, give it a good blow-dry, and iron it with a hair iron set on 180 degrees.





FOR A DEEP MOISTURIZING AND HAIR LAMINATION SESSION

On clean hair:

For dyed hair:

- 80 g of Strand Reconstructor from Sweeteez Professional
- 1 ampoule Sweeteez Vitamin Complex
- 1 Ampoule Sweeteez Flash Cells
- 10 milliliters of Sweeteez's Total Remedy Total Sealer.

Mix the ingredients together, then apply to clean hair and leave it on for 60 minutes. After that, rinse the hair, give it a good blow-dry, and iron it with a hair iron set on 180 degrees.



FOR A DEEP MOISTURIZING AND HAIR LAMINATION SESSION

On clean hair:

For curly hair:

- 1 ampoule Sweeteez Vitamin Complex
- 1 Ampoule Sweeteez Flash Cells
- 10 milliliters of Sweeteez's Total Remedy Total Sealer
- 4 squeezes of Gold Caviar Serum


Mix the ingredients together, then apply to clean hair and leave it on for 60 minutes. After that, rinse the hair, give it a good blow-dry, and iron it with a hair iron set on 180 degrees.




Sweeteez

PROFESSIONAL



 sweeteezprofessional

 sweeteez.professional

 info@sweeteez.com.br

 +55 11 98176-0897

 www.sweeteez.com.br